

PMC 1250

Container Forming Machine



Straight wall containers are formed inline with the filler at speeds up to 125 cpm. This reduces cost of materials, freight and labor. The first containers formed at startup are commercial – minimizing spoilage. The PMC 1250 also reads bar codes to prevent mixing of multi-product lines.



Package strength is enhanced with recessed bottoms. This improves product protection, increases ease of stacking and reduces distribution costs.

The PMC 1250 model is easy to operate:

- A servo bottom feeder by-passes roll splices
- Cycle stop clears the machine during stoppage
- Idle mode keeps the machine operating during line stoppages which insures quick start-up when production resumes



PMC 1250 can produce containers up to 46 ounces.

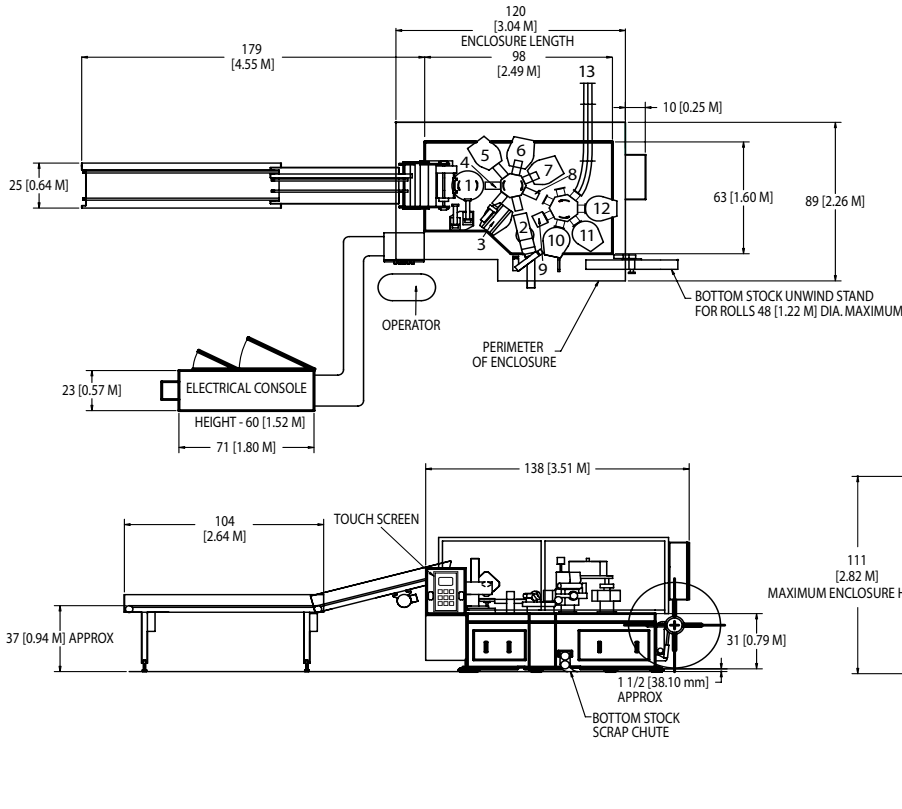


Paper Machinery Corporation

8900 West Bradley Road • Milwaukee, WI 53224 USA • 414-354-8050 • www.papermc.com



PMC 1250 Container Machine



Station Name

- | | |
|--------------------------------|---------------------------|
| 1. Blank Transfer Turret | 7. Bottom Finishing |
| 2. Bottom Blanking and Forming | 8. Transfer |
| 3. Bottom Reformer | 9. Tamper/Lube |
| 4. Sidewall Blank Folding Wing | 10. Rimming (Precurl) |
| 5. Bottom Heating | 11. Rimming (1st Curl) |
| 6. Bottom Incurl | 12. Rimming (Finish Curl) |
| | 13. Container Eject |

Machine Height

Max 111" (2.82 m)

Discharge Height

42" (1.07 M)

PMC 1250 Machine Specifications

Conversion Materials

Containers are formed from preprinted, die cut sidewall blanks and web fed bottom stock. In-line printed sidewall roll stock may also be used. Materials must be one-side or two-side heat-sealable polyethylene coated paperboard. Foil or film laminates may be included. Curled top edge requires SBS cupstock with specific elongation, ply bond and moisture characteristics.

Approximate Machine Weight

Base Machine 14,000 lbs. (6350 Kg) approx.
 Electrical Cabinet..... 2,000 lbs. (907 Kg) approx.
 16,000 lbs. (7257 Kg) approx.

Supporting Technical Information

Installation floor plan, assembly drawings, electrical diagrams, parts list and maintenance and operation instruction manuals are furnished with the machine.

Paint Specifications

The machine is prime coated and painted with industrial grade primer and enamel. The standard color is cream with yellow guards and orange electrical shields and enclosures. Other colors are available on special order if specified at time of purchase.

Service Requirements

Electrical	Compressed Air	VAC	Water*
	SCFM (m3/S)	SCFM (m3/S)	Gal/Min (Liter/Min)
100 KVA (Approx.) 3 Phase 50 or 60 Hertz Voltage supplied to suit customer network	Basic machine 125 @ 80 PSI (.030 @ 5.6 Kg/Cm2)	Basic machine 35 @ 18" HG (.014 @ .62 Kg/Cm2) Add for blank feeder - 75 @ 18" HG (.014 @ .62 Kg/Cm2)	.5 @ 20 PSI (1.9 @ 1.4Kg/Cm2)

*Volume flow rates listed are flow rates at standard conditions, 1.0 atmosphere and 68° F.

Exact service requirements are dependent upon customer specifications.

*Water is not recirculated or chilled.



Paper Machinery Corporation

8900 West Bradley Road • Milwaukee, WI 53224 • 414-354-8050 • www.papermc.com