

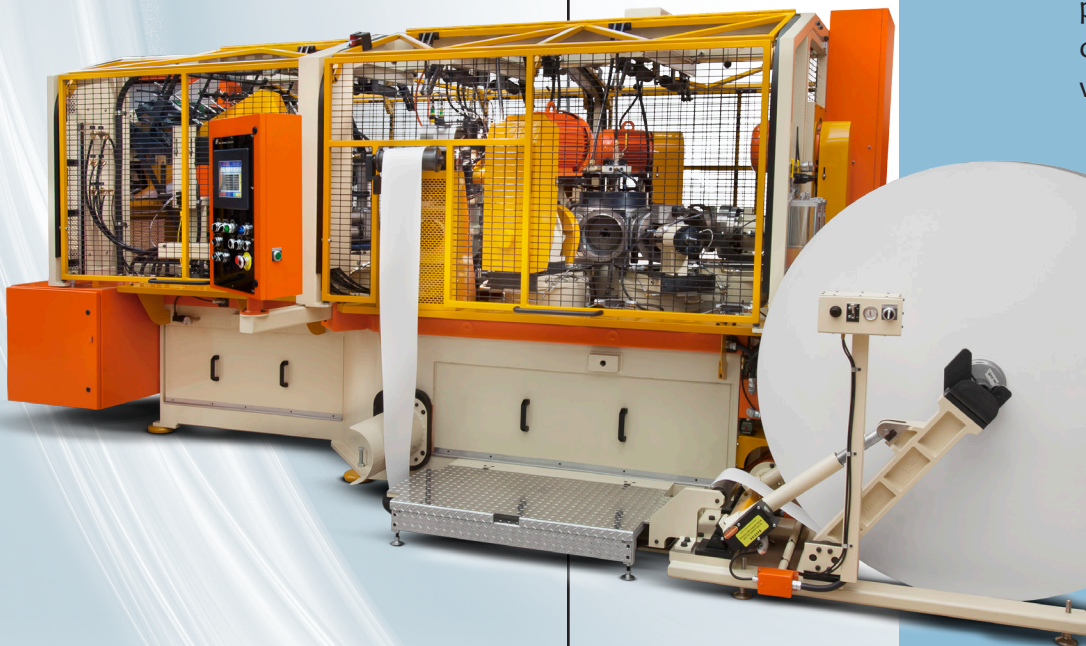
PMC 1300 Cup & Container Forming Machine

The PMC 1300 Series is designed for maximum production flexibility in response to the demands of downstream production. It is capable of producing large round or non-round, paperboard or plastic, tapered or straight wall containers with flat or recessed bottoms.

The PMC 1300 features cam actuated machine and station functions to ensure synchronized operation and efficient, repeatable container production. The quick height tooling change is ideal for production of various sized containers. And the servo drive bottom feeder improves efficiency and allows for printed bottom materials.

Produces containers at speeds up to 120 CPM.

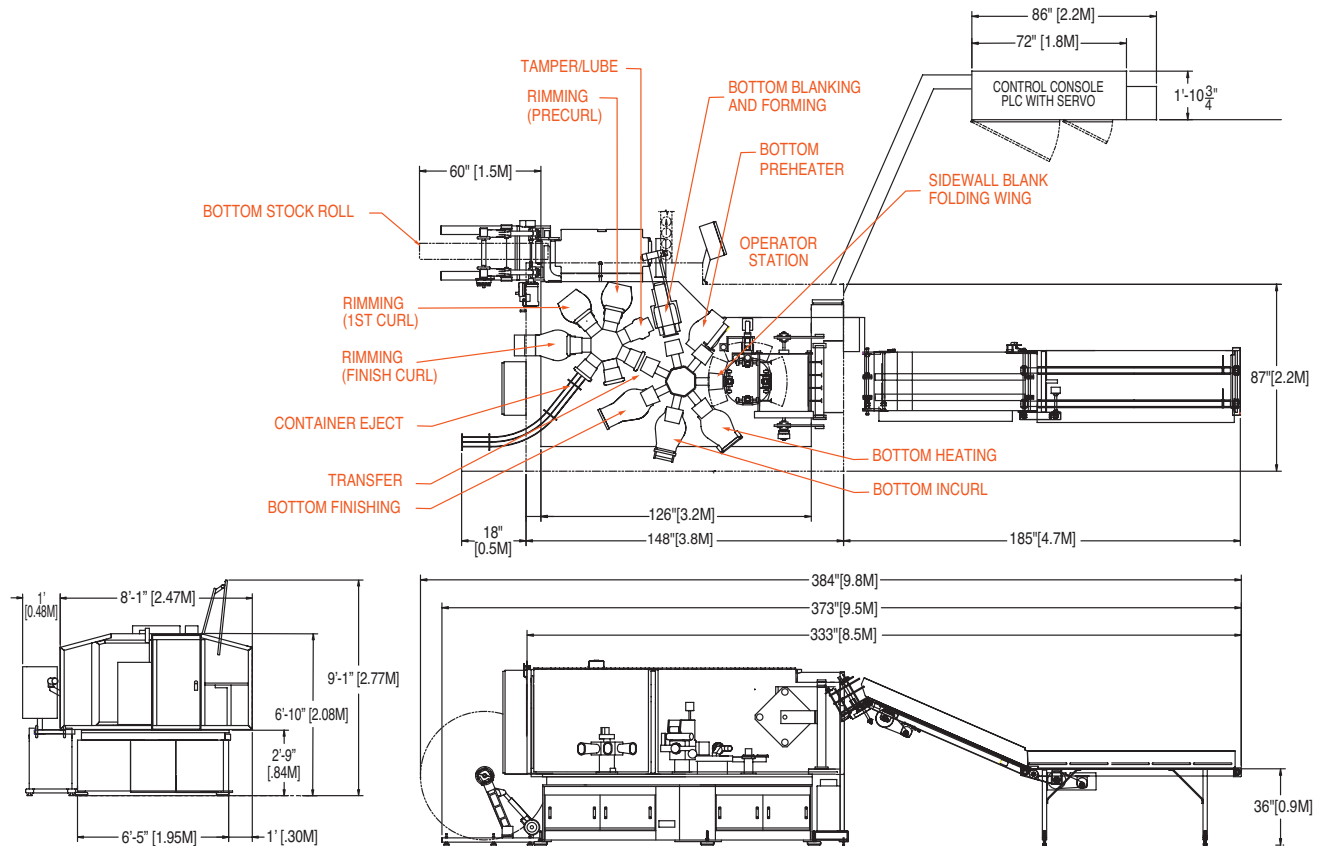
Forms containers ranging from 25 oz. to 145 oz., depending on configuration, and up to 12 inches in height with large cross sections.



Paper Machinery Corporation

Forming innovation since 1951.

PMC 1300 Cup & Container Forming Machine



PMC 1300 Machine Specifications

Materials

Cups and containers are formed from preprinted die-cut sidewall blanks and web-fed bottom stock.

Approximate Machine Weight

Base Machine	24,000 lbs. approx.
Electrical Cabinet	1,500 lbs. approx.
	25,500 lbs. approx.

Size Range

Produces 25 oz. (750 ml) to 145 oz. (4300 ml) two piece paper or plastic cups.

Service Requirements

Electrical	Compressed Air*	Machine Vacuum*	Add Vacuum* for Blank Feeder	Water
100 kVA 3PH @ 50 or 60 HZ	225 ft ³ /min @ 80 lb/inch ² or 0.106 m ³ /sec @ 6.5 kg/cm ²	100 ft ³ /min @ 18 inches Hg or 0.047 m ³ /sec @ 0.62 kg/cm ²	35 ft ³ /min @ 18 inches Hg or 0.017 m ³ /sec @ 0.62 kg/cm ²	0.5 gal/min @ 20 lb/inch ² or 1.9 liter/min @ 1.4 kg/cm ²

*Volume flow rates listed are flow rates at standard conditions, 1.0 atmosphere and 68° F.
Exact service requirements are dependent upon customer specifications.

5-31-2013



Paper Machinery Corporation

8900 West Bradley Road
Milwaukee, WI 53224 USA

414-354-8050 | www.papermc.com