

PMC 2000S

Cup & Container Forming Machine

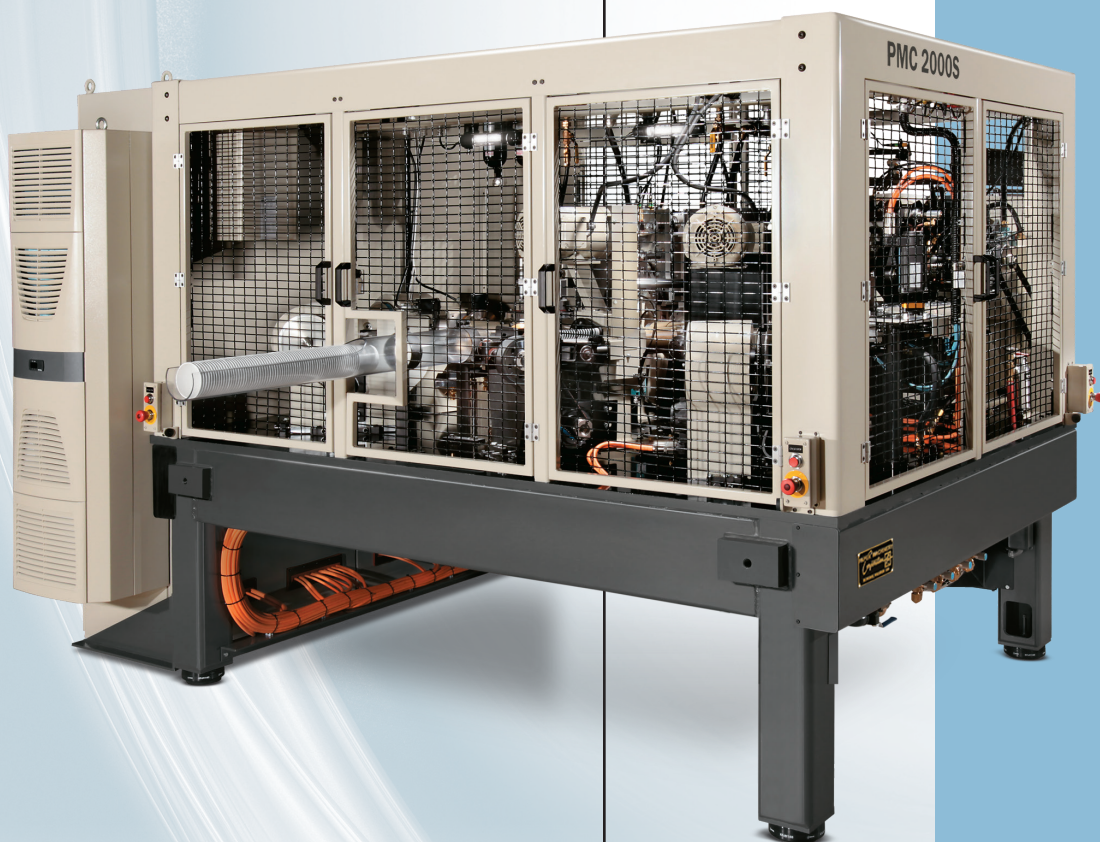
The PMC 2000S forming machine is an entirely servo-driven, state-of-the-art design. It efficiently forms paperboard cups and tapered or straight wall containers.

The PMC 2000S offers new levels of production flexibility. Changeover can be achieved within one shift, making the 2000S an excellent choice for small production runs.

The PMC 2000S features a servo bottom feeder to bypass splices, a cycle stop to clear blanks, and an idle mode to facilitate maximum production.

Produces containers at speeds up to 200 CPM.

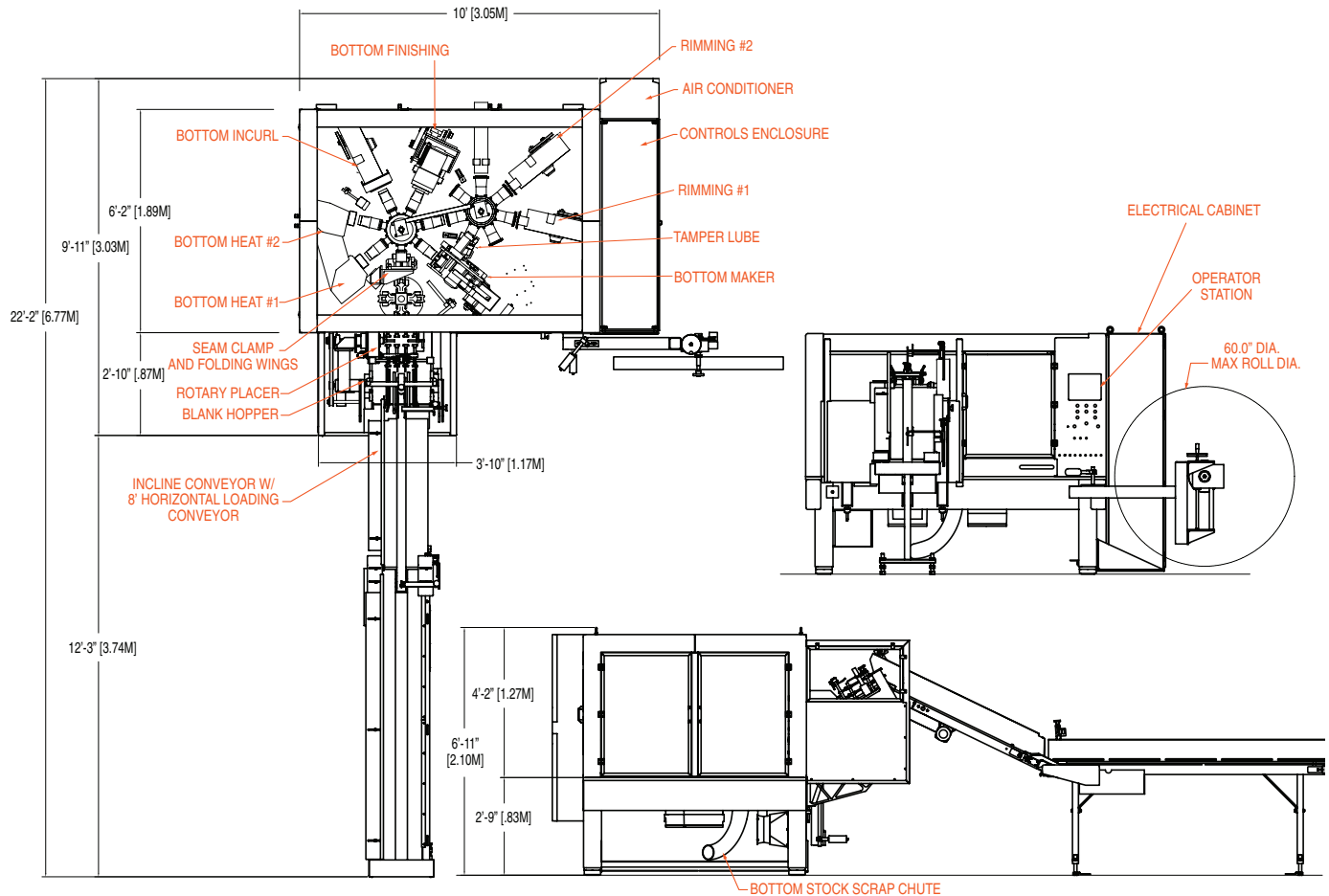
Forms containers ranging from 4 oz. to 22 oz. depending upon configuration.



Paper Machinery Corporation

Forming innovation since 1951.

PMC 2000S Cup & Container Forming Machine



PMC 2000S Machine Specifications

Materials

Cups and containers are formed from preprinted die-cut sidewall blanks and web-fed bottom stock.

Approximate Machine Weight

Base Machine	12,000 lbs. approx.
Electrical Cabinet	1,500 lbs. approx.
	13,500 lbs. approx.

Size Range

Produces 4 oz. (120 ml) to 22 oz. (650 ml), two piece paperboard cups.

Service Requirements

Electrical	Compressed Air*	Machine Vacuum*	Water
105 kVA 3PH @ 50 or 60 HZ	115 ft ³ /min @ 80 lb/inch ² or .054 m ³ /sec @ 5.5 bar	90 ft ³ /min @ 18 inch Hg or .042 m ³ /sec @ 0.62 kg/cm ²	0.5 gal/min @ 20 lb/inch ² Hg or 1.9 liter/min @ 1.4 kg/cm ²

*Volume flow rates listed are flow rates at standard conditions, 1.0 atmosphere and 68° F.

Exact service requirements are dependent upon customer specifications.

9-24-2014



Paper Machinery Corporation

8900 West Bradley Road
Milwaukee, WI 53224 USA

414-354-8050 | www.papermc.com