

SERVICE BULLETIN

PAPER MACHINERY CORPORATION

address **8900 WEST BRADLEY ROAD MILWAUKEE, WI 53224-2822** • mailing **P.O. BOX 240100 MILWAUKEE, WI 53224-9005**
 telephone **414-354-8050** • main FAX **414-354-8614** • service FAX **414-354-1710** • website **WWW.PAPERMC.COM**

120906

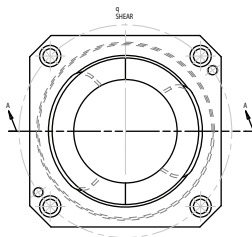
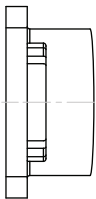
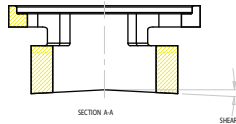
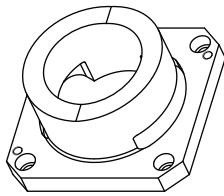
BOTTOM FORMING PUNCH

237.1

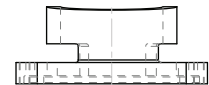
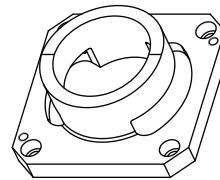
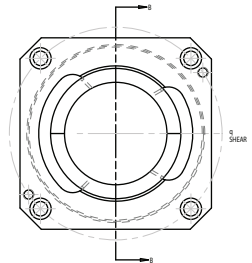
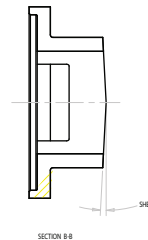
NEW SHEAR DIRECTION ALL MACHINES

PMC has changed the direction of the shear on the bottom forming punch. A peak style (new) shear will replace the valley style grinding shear (old).

The new shear direction will make it easier to sharpen and extend the punch life. The new shear will apply to new punches as a replacement part or in new tooling sets. This change went into effect on 10-27-2011.



OLD SHEAR



NEW SHEAR

NOTE:
SHEAR IS SHOWN EXAGGERATED FOR CLARITY

CONTACT

Parts orders and customer communication can be made using telephone, FAX, or e-mail. See below. Contact can also be made using the **main** telephone switchboard at 414-354-8050 or FAX number 414-354-8614. Sending a FAX **directly** to the Service Department, at 414-354-1710, will convey a faster response. If using e-mail and no response is made within 3 working days, please contact via phone or FAX.

MIKE FERGUSON
TECHNICAL SERVICE
& TRAINING
414-362-8228
mferguson@papermc.com

STEVE EVANS
SERVICE
COORDINATOR
414-362-8271
sevens@papermc.com

LARRY SPENCER
ELECTRICAL APPLICATIONS
SERVICE ENGINEER
414-362-8232
lspencer@papermc.com

VICKY ALCARAZ
SUPPORT COORDINATOR
& EXPEDITER
414-362-8263
valcaraz@papermc.com

HOLLY WARNER
PARTS SERVICE
414-362-8259
hwarner@papermc.com

JESSICA MOJICA
PARTS SERVICE
414-362-8227
jmojica@papermc.com

DANIELLE TRUE
PARTS SERVICE
414-362-8260
dtrue@papermc.com

Please make sure to carbon copy (CC) Holly Warner, Jessica Mojica, and Danielle True in **all** e-mails containing parts orders, and carbon copy (CC) **both** Mike Ferguson and Steve Evans in **all** other e-mails.