

# PMC OW 800

## Cup & Container Overwrap Machine

The PMC OW 800 wraps and seals pre-printed blanks around cups and containers for increased strength, insulation, and randing.

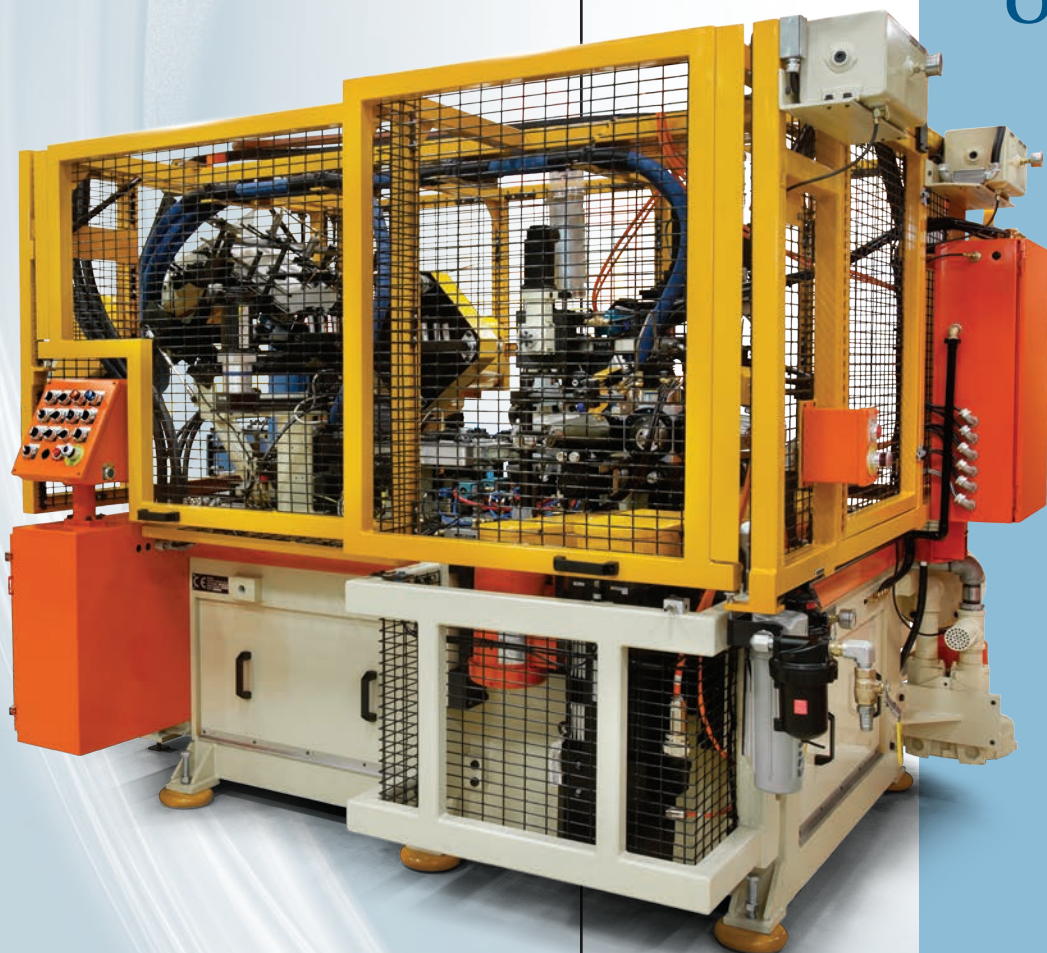
This extremely versatile machine platform offers a wide variety of configurations for wrapping label stock, micro flute or embossed materials around paperboard and plastic containers.

Optional stations are available for diecutting blanks from roll fed material and for embossing blanks on the machine.

The PMC OW 800 offers hot melt, cold glue or FHA sealing options and can be designed with single or dual in-feed for insulating layers, embossing or decorative wraps.

The OW 800 platform provides the greatest range of overwrapped sizes, wrapping containers from 2.5 oz. to 46 oz. depending upon configuration.

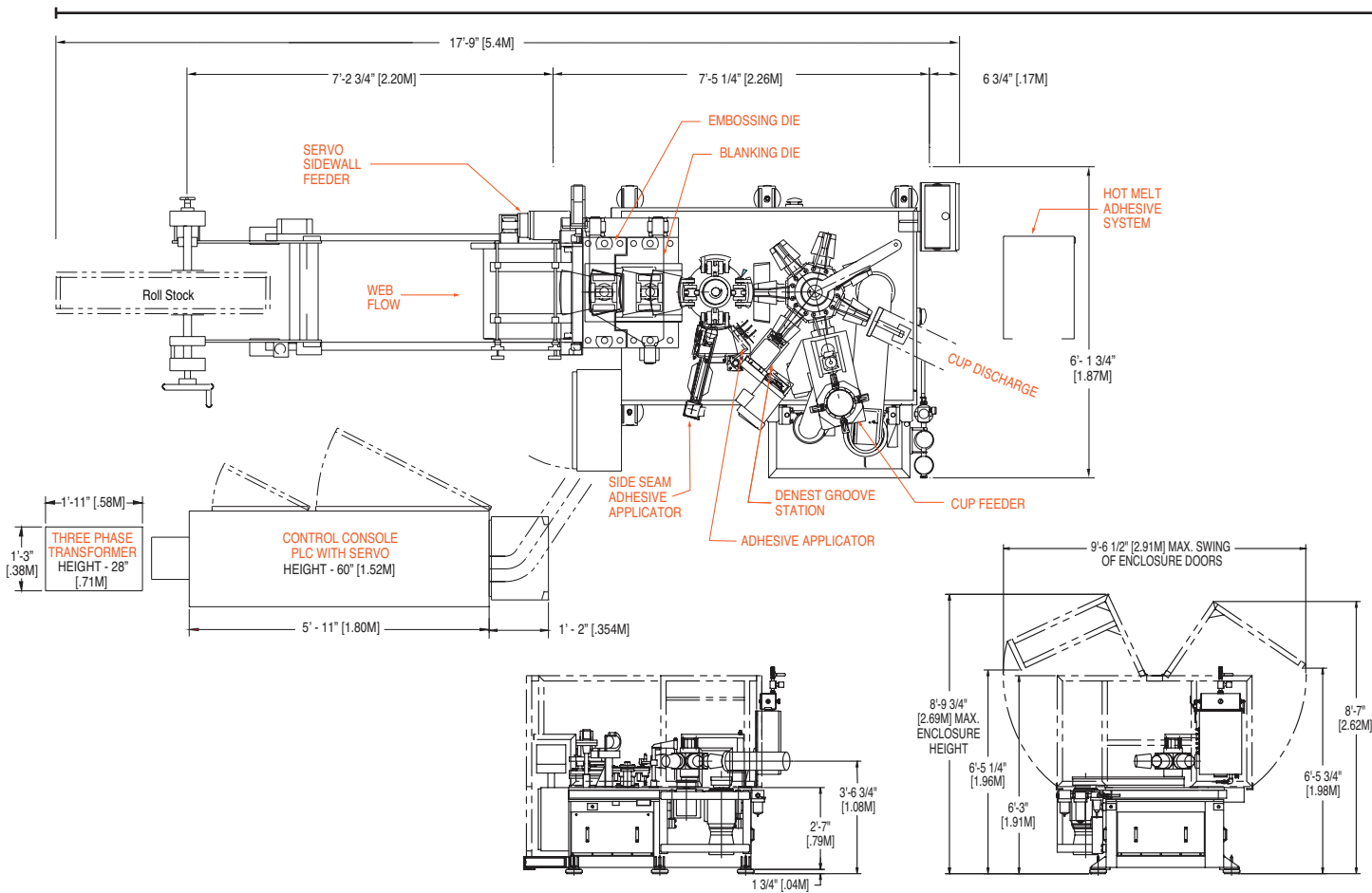
Wraps cups and packages at speeds up to 165 CPM.



**Paper Machinery Corporation**

*Forming innovation since 1951.*

# PMC OW 800 Overwrapping Machine



This drawing is only an example for space planning. Each machine design will be provided with a unique floor plan.

## PMC OW 800 Machine Specifications

### Materials

Paperboard or plastic base containers can be wrapped. Paperboard wrap can be virgin or recycled paperboard, embossed or microflute materials in blank or web form.

### Approximate Machine Weight

Base Machine	11,300 lbs. approx.
Electrical Cabinet	1,700 lbs. approx.
	13,000 lbs. approx.

### Size Range

Wraps 2.5 oz. (75 ml) to 46 oz. (1350 ml) paperboard or plastic cups and containers.

### Service Requirements

Electrical	Compressed Air*	Machine Vacuum*	Add Vacuum* for Blank Feeder
47 kVA 3PH @ 50 or 60 HZ	65 ft <sup>3</sup> /min @ 80 lb/inch <sup>2</sup> or 0.031m <sup>3</sup> /sec @ 5.6 kg/cm <sup>2</sup>	75 ft <sup>3</sup> /min @ 18 inches Hg or 35 m <sup>3</sup> /sec @ 0.62 kg/cm <sup>2</sup>	15 ft <sup>3</sup> /min @ 18 inches Hg or 0.007 m <sup>3</sup> /sec @ 0.62 kg/cm <sup>2</sup>

\*Volume flow rates listed are flow rates at standard conditions, 1.0 atmosphere and 68° F.  
Exact service requirements are dependent upon customer specifications.

2-28-2018



**Paper Machinery Corporation**

8900 West Bradley Road  
Milwaukee, WI 53224 USA

414-354-8050 | [www.papermc.com](http://www.papermc.com)