

PMC OW 2000S

Cup & Container Overwrap Machine

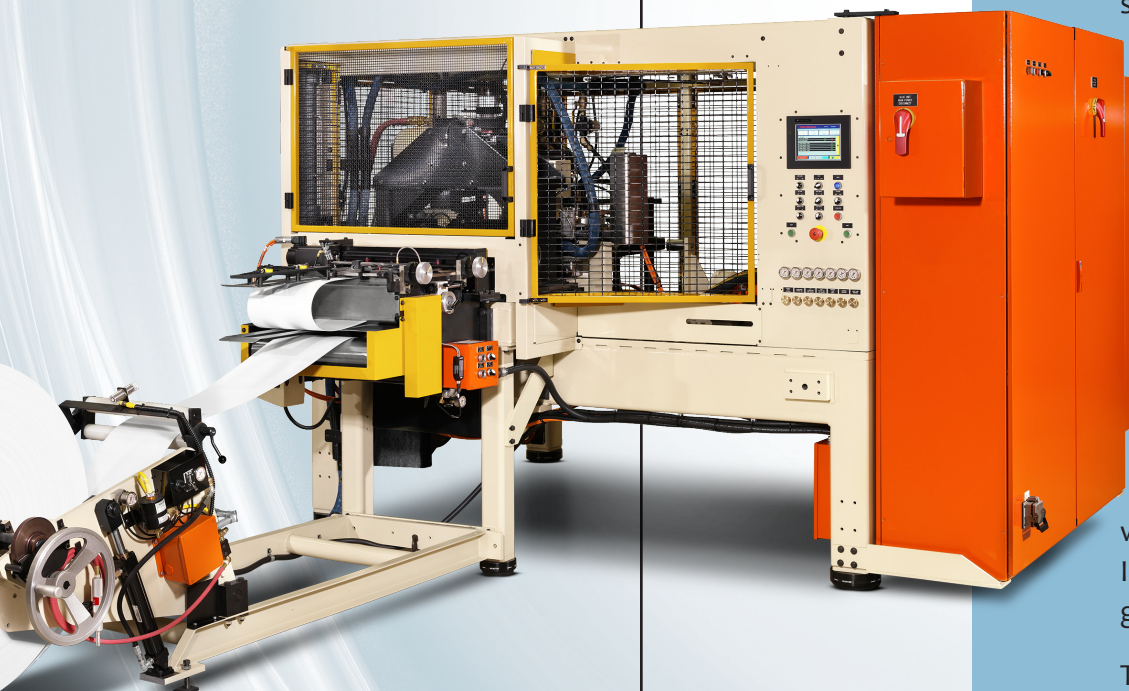
The PMC OW 2000S overwrap machine is an entirely servo-driven, state-of-the-art design.

The PMC OW 2000S can be designed with configurations for wrapping label stock or micro flute materials around paperboard and plastic containers. Tooling is available for wrapping round or non-round containers.

This innovative line of servo-driven overwrap machines offers tremendous production flexibility with efficient tooling changeovers. Its high wrap speed provides greater production capacity.

The PMC OW 2000S is available with hot melt, cold glue or FHA sealing options and can accommodate roll feed or blank feed for insulating layers or decorative wraps.

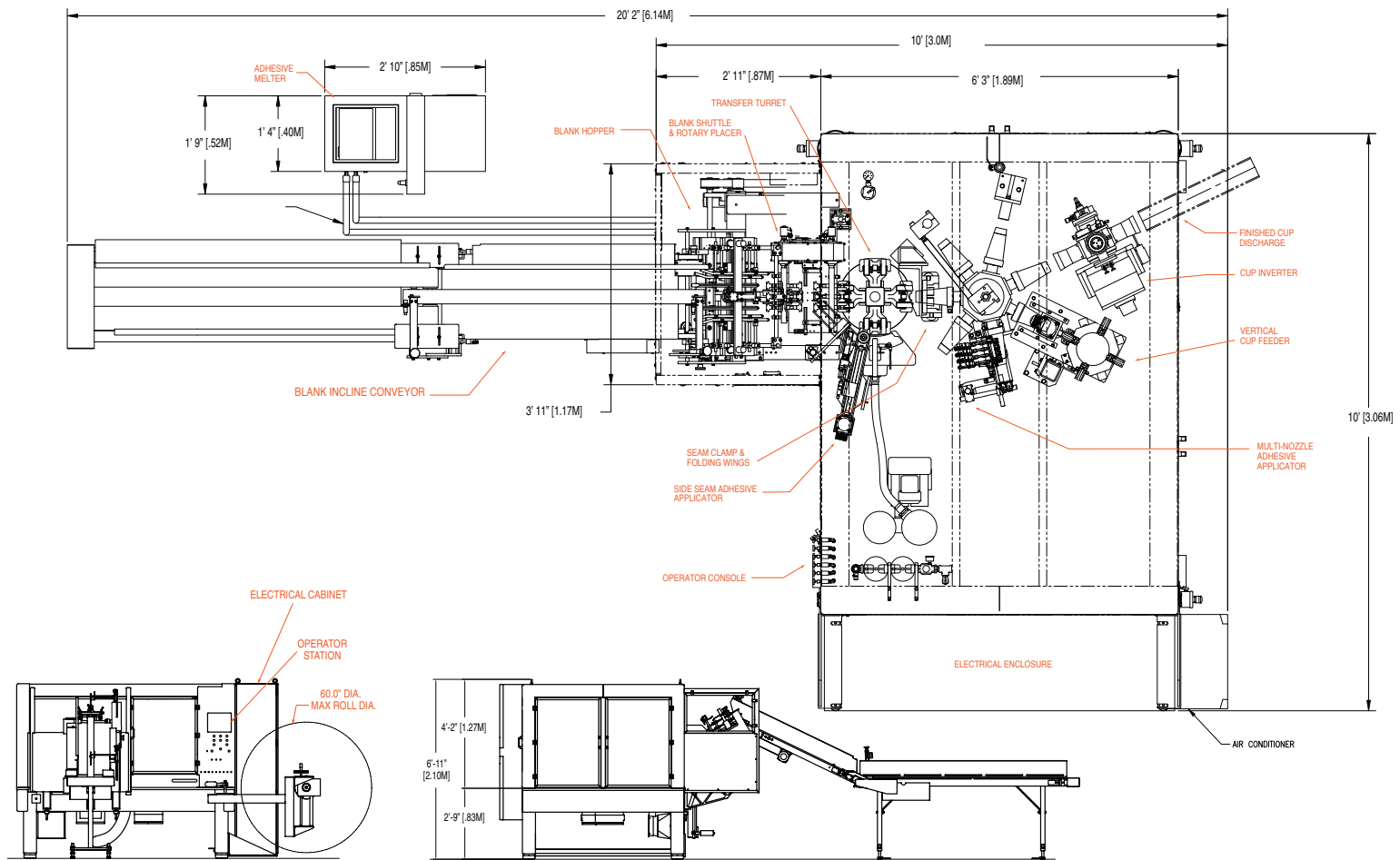
Wraps containers ranging from 4 oz. to 22 oz. at speeds up to 200 CPM depending upon configuration.



Paper Machinery Corporation

Forming innovation since 1951.

PMC OW 2000S Overwrapping Machine



This drawing is only an example for space planning. Each machine design will be provided with a unique floor plan.

PMC OW 2000S Machine Specifications

Materials

Paperboard or plastic base containers can be wrapped. Paperboard wrap can be virgin or recycled paperboard or microflute materials in blank or web form.

Approximate Machine Weight

Base Machine/ 9,500 lbs. approx.
Electrical Cabinet

Size Range

Wraps 4 oz. (120 ml) to 22 oz. (650 ml) paperboard or plastic cups and containers.

Service Requirements

Electrical	Compressed Air*	Machine Vacuum*	Add Vacuum* for Blank Feeder
60 kVA 3PH @ 50 or 60 HZ	55 ft ³ /min @ 80 lb/inch ² or 0.026 m ³ /sec @ 5.6 kg/cm ²	75 ft ³ /min @ 18 inches Hg or 35 m ³ /sec @ 0.62 kg/cm ²	15 ft ³ /min @ 18 inches Hg or 0.007 m ³ /sec @ 0.62 kg/cm ²

*Volume flow rates listed are flow rates at standard conditions, 1.0 atmosphere and 68° F.

Exact service requirements are dependent upon customer specifications.

3-15-2018



Paper Machinery Corporation

8900 West Bradley Road
Milwaukee, WI 53224 USA

414-354-8050 | www.papermc.com