

PMC 2500S

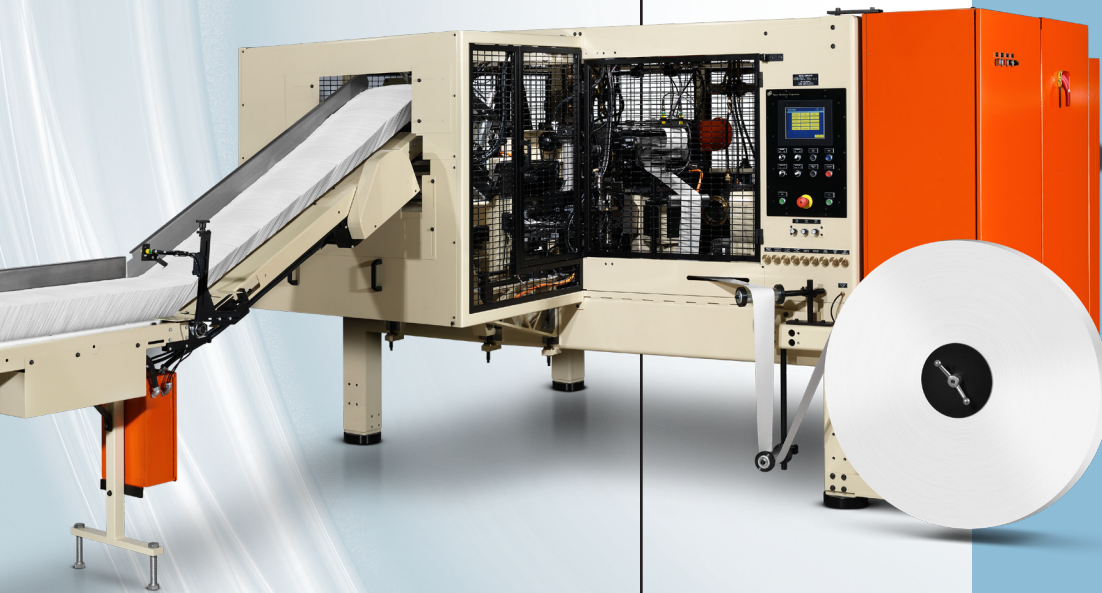
Cup & Container Forming Machine

The PMC 2500S forming machine combines speed, versatility, and reliable performance with an entirely servo-driven platform for greater production flexibility.

The PMC 2500S efficiently forms inline, and creates pre-formed nestable containers for converters and co-packers. The servo design allows fast tooling change-overs for cups and containers in round or non-round and tapered or straight wall configurations.

Produces tapered cups and containers at speeds up to 170 CPM.

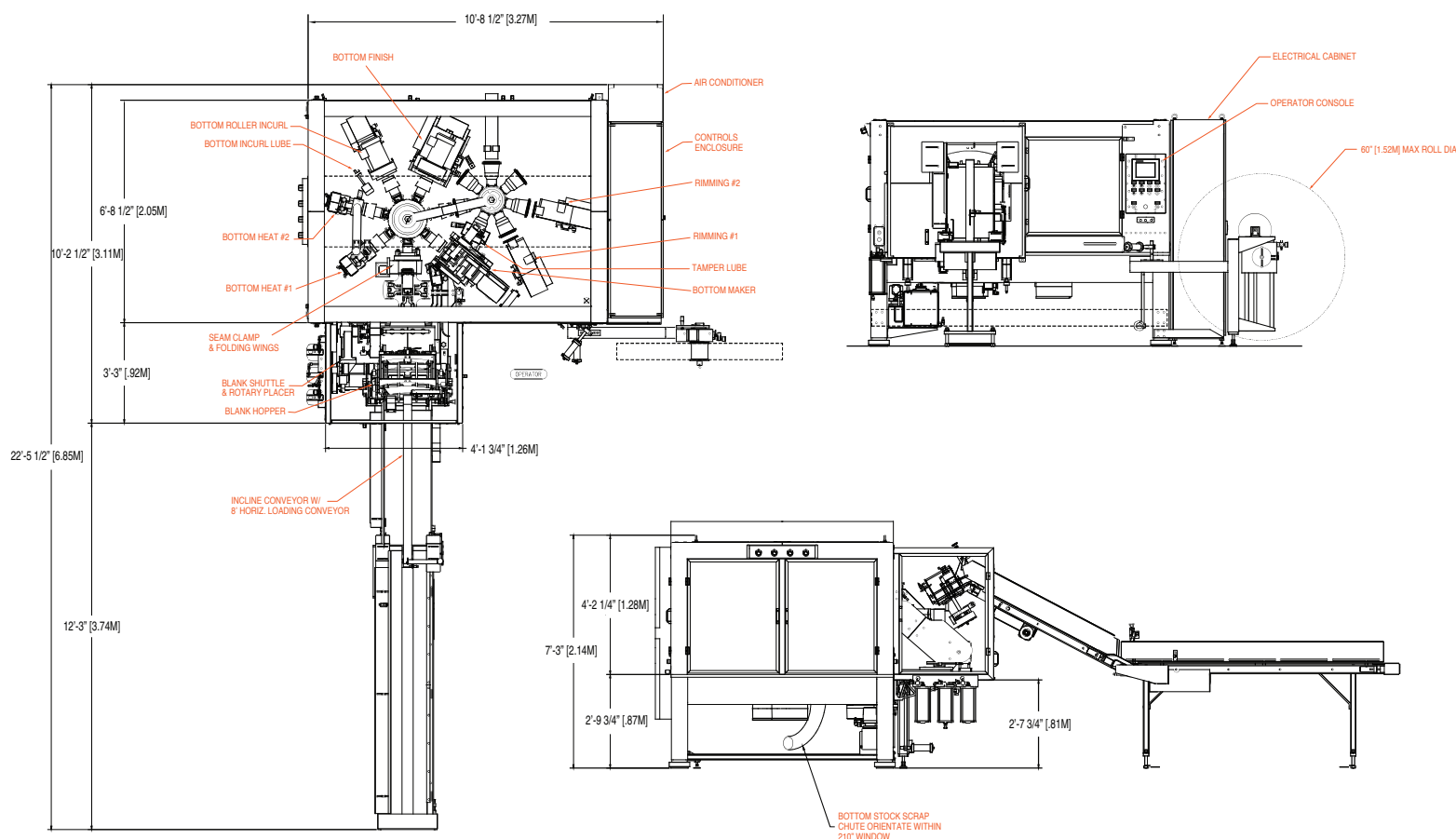
Forms paper or plastic containers ranging from 4 oz. to 46 oz. depending upon configuration.



Paper Machinery Corporation

Forming innovation since 1951.

PMC 2500S Cup & Container Forming Machine



PMC 2500S Machine Specifications

Materials

Cups and containers are formed from preprinted die-cut sidewall blanks or roll stock, and web-fed bottom stock.

Approximate Machine Weight

Base Machine	12,500 lbs. approx.
Electrical Cabinet	1,500 lbs. approx.
14,000 lbs. approx.	

Size Range

Produces 4 oz. (120 ml) to 46 oz. (1360 ml), two piece paperboard or plastic cups.

Service Requirements

Electrical	Compressed Air*	Machine Vacuum*	Water
105 kVA 3PH @ 50 or 60 HZ	150 ft ³ /min @ 80 lb/inch ² or .071 m ³ /sec @ 5.5 bar	90 ft ³ /min @ 18 inch Hg or .042 m ³ /sec @ 0.62 kg/cm ²	0.5 gal/min or 1.9 liter/min

*Volume flow rates listed are flow rates at standard conditions, 1.0 atmosphere and 68° F.
Exact service requirements are dependent upon customer specifications.



Paper Machinery Corporation

8900 West Bradley Road
Milwaukee, WI 53224 USA

414-354-8050 | www.papermc.com