



**PAPER  
MACHINERY  
CORPORATION**

Contact Paper Machinery Corporation's dedicated sales representatives  
for more information or to schedule a demonstration.

[explore.papermc.com](https://explore.papermc.com)

+1 (414) 354-8050 | 8900 West Bradley Road | Milwaukee, WI 53224 USA



**SPEED.  
EFFICIENT.  
RELIABLE.**

Nothing else stacks up to it.



**PMC CS 251X**  
**Cup & Counter/Stacker**

# COLLECTS, COUNTS, & STACKS



## MACHINE SPECIFICATIONS      SERVICE REQUIREMENTS

**SIZE RANGE:** The CS 251X can accept cups ranging in size from 3 oz. through 46oz.  
**Cup rim diameter range:**  
Min. 2.0" (50.8mm)      Max. 5.6" (142mm)

No change of parts required. Size changes are accomplished in as little as twenty minutes.

**PRODUCTION RATES:** Cup stacks are small as 25 cups or as large as 100 cups can be collected. The CS 251X will accommodate the maximum output of the PMC 750, PMC 1000, PMC 1001, PMC 1002 or the PMC 1250 machine.

**ELECTRICAL:** 2 KVA (approx.) 120 volts, phase 1, 50 or 60 hertz  
**COMPRESSED AIR:** 80 PSI @ 5.62 kg/cm<sup>2</sup>  
**DIMENSION & WEIGHTS:**

Length.....5' 3.50" (1610mm)  
Width.....5' 7.25" (1707mm)  
Height.....6' 8.00" (2029mm)  
Shipping Weight.....750 lbs. (340kg)

### ACCOMMODATES A VARIETY OF SIZES

Designed for in-line production with PMC's most popular cup converting machines, the PMC CS 251X Cup Counter/Stacker automatically collects, counts and stacks cups in a wide range of sizes.



### EFFICIENT AND FLEXIBLE

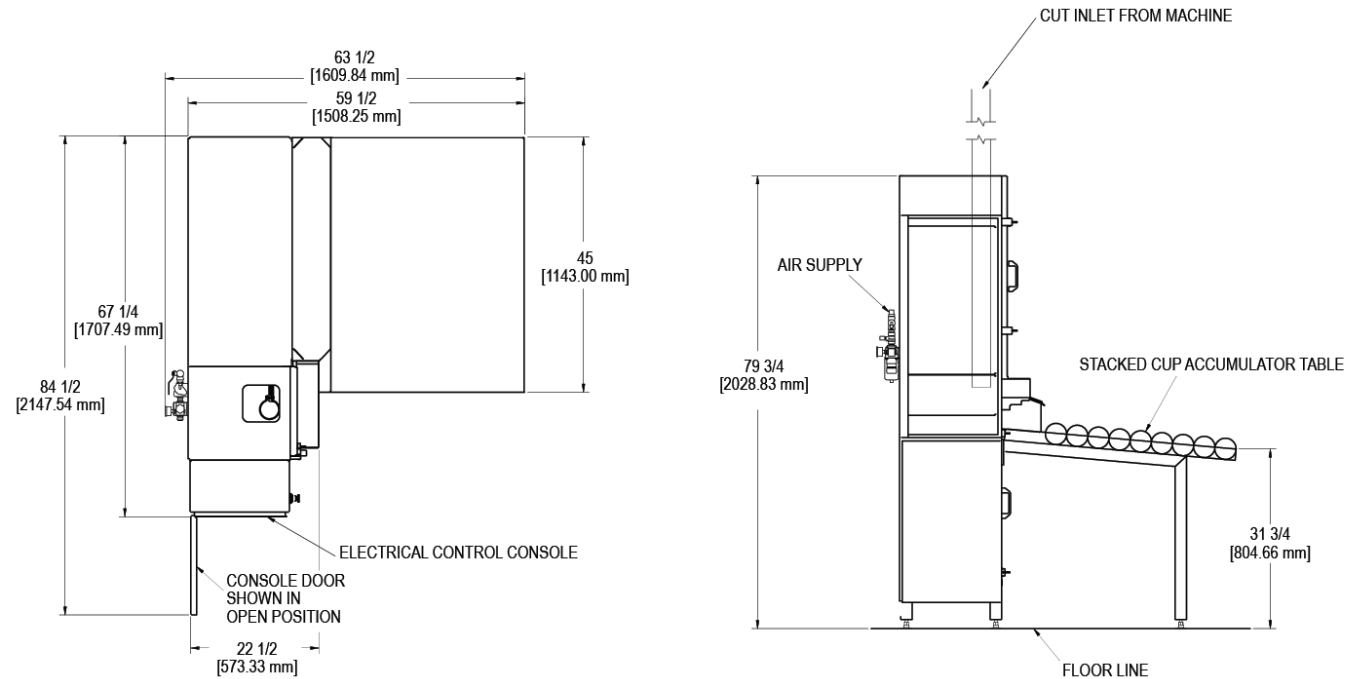
Cups are fed from the converting machine through pneumatic tubing to the CS 251X, which counts them and places them into horizontal stacks of 25 to 100 cups, ready for manual bagging or packaging. Cup size changeovers can be made in as little as twenty minutes with not part changes.

### THE PMC CS 251X CUP COUNTER/STACKER

- Automatically collects, counts and stacks cups 3 ounces through 46 ounces in size.
- Touch screen display allows operator to change and view numbers of cups in stack.
- Accommodates maximum production outputs from PMC's 750, 1000, 1001, 1002 and 1250 Cup Machines.



## PMC CS 251X FLOOR PLAN



**PAINT SPECIFICATIONS:** The machine is prime coated and painted with industrial grade primer and enamel. The standard color is cream with yellow guards and orange electrical shields and enclosures. Other colors are available on special order if specified at the time of purchase.

**SUPPORT TECHNICAL DOCUMENTATION:** Dimensioned floor plans, assembly drawings, electrical diagrams and parts are supplied with the machine.

**DECLARATION:** The policy of Paper Machinery Corporation is one of the continued improvements in the design and manufacture, whenever possible, to ensure a still finer product. Hence, specifications, equipment and prices are subject to change without notice.