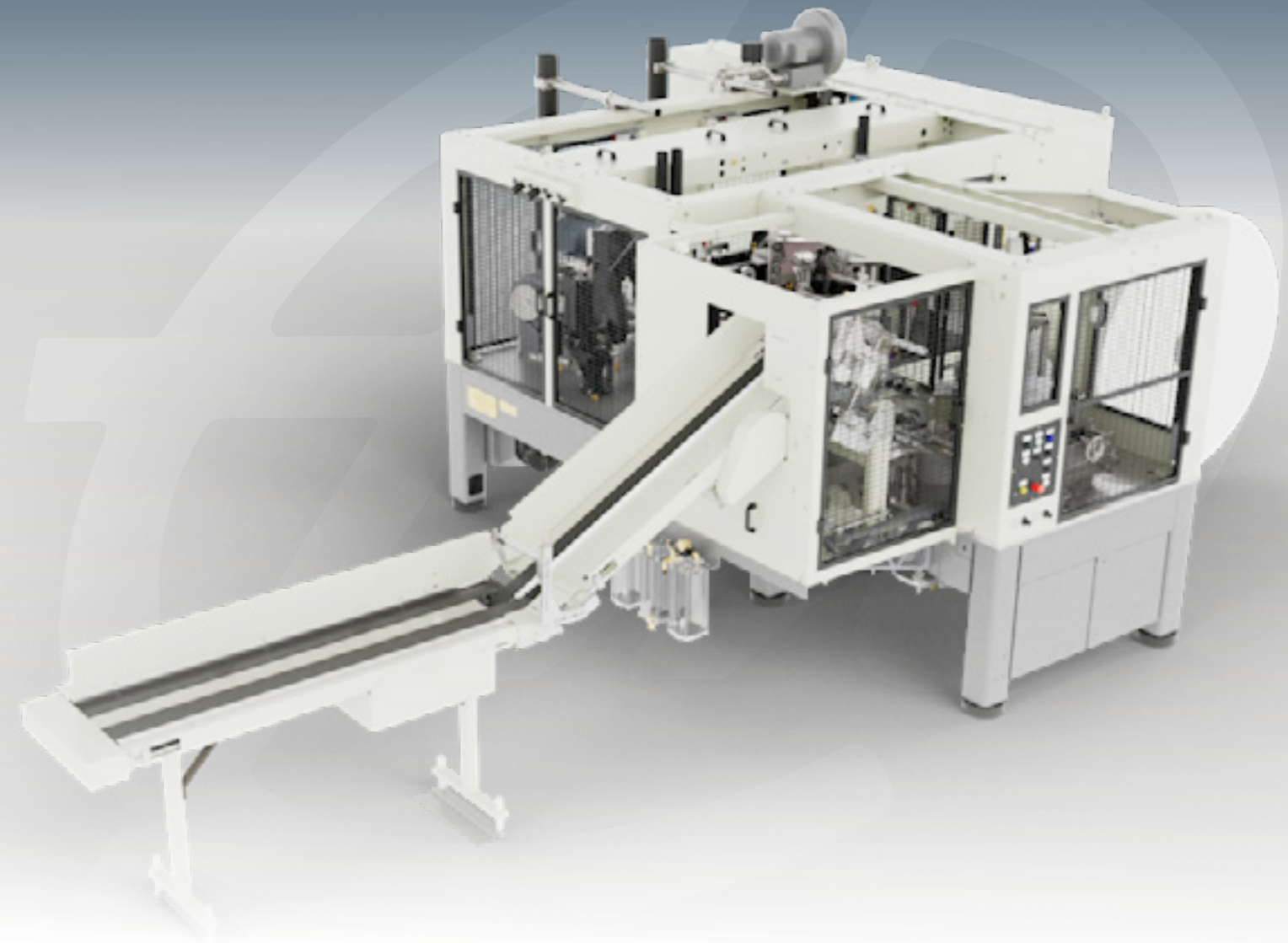




## A SINGLE PLATFORM THAT DOES MORE

An all-in-one machine delivering paperboard containers with barrier protection



# 2001S - IN LINE EP

Cup Forming and Edge Protection Machine



**PAPER  
MACHINERY  
CORPORATION**

Contact your dedicated Paper Machinery Corporation sales representative for [more information](#) or to [schedule a demonstration](#).

[explore.papermc.com](http://explore.papermc.com)

8900 West Bradley Road | Milwaukee, WI 53224 USA



## COMBINING TWO MACHINES INTO ONE

Globally, with an increase in the number of bans for creating products with plastics, regulatory efforts are growing the demand for single-use paper products. Packing productivity into a smaller space and allowing you to expand into the paper product market, the Inline 2001S Cup Forming and Edge Protection Machine is an all-in-one platform that combines a cup forming machine with an edge protection machine—delivering the next step in the PMC line of our entirely servo-driven, state-of-the-art machines. In a single solution, the Inline 2001S allows you to create an all-in-one paperboard container or cup that features barrier protection for flat rim cups. It brings together high-speed, servo-driven production speeds with the ability to enhance the barrier of a paperboard package all in the same machine. It's a cost-effective solution that delivers more productivity in less space.

## MACHINE SPECIFICATIONS

**SPEED:** Up to 200 cups per minute

**SIZE RANGE:**

- VOLUME:** 4 – 22 oz.
- TAPE LENGTH:** 1.6" min – 6.0" max
- SIDEWALL LENGTH:** Up to 13.25"

**APPROX. MACHINE WEIGHT:** 16,000 lbs (7,286 KG)

## UTILITY REQUIREMENTS

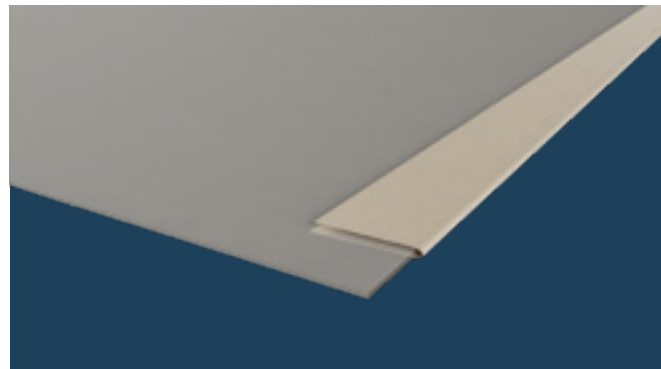
**ELECTRICAL:** 142 KVA 480VAC 3PH @ 50 HZ

**VACUUM:** 90 SCFM @ 18" HG (2.5M<sup>3</sup> / MIN @ 61 KPA)

**COMPRESSED AIR:** 65 SCFM @ 80 PSI (1.8 M<sup>3</sup> / MIN @ 5.5 BAR) 1 - 1/2" MIN. Supply line

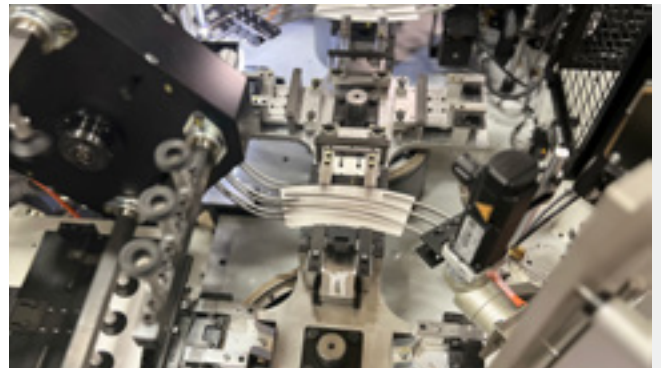
### EXPAND TO NEW MARKETS

Adding advanced barrier protection, the Inline 2001S efficiently forms paperboard tapered or straight wall, round and non-round cups and containers. With increased resistance to oxidation, transmission of moisture, and the absorption of oils, this machine is ideal for creating packaging for use with pre-packaged organic and inorganic products—enabling you to explore new markets where paperboard container offerings can deliver enhanced shelf life for products such as dairy.



### EFFICIENT. FLEXIBLE. VERSATILE.

Tooling changeover on PMC's servo-driven machines can be achieved within an eight hour shift, making them an excellent choice for small production runs. Flat rim tooling provides perfect solution for membrane application in dairy products.



### GET MORE DONE, IN LESS SPACE

By combining the 2001S and EP 100 into one single platform, we've created a dual purpose machine that efficiently produces containers up to 200 CPM in a compact footprint—facilitating a new level of productivity for your operation.

